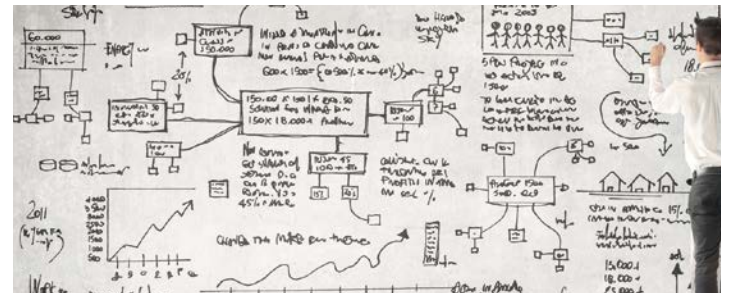
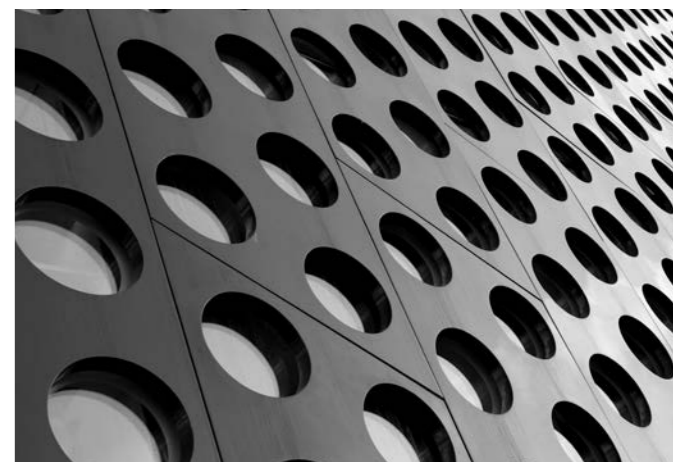
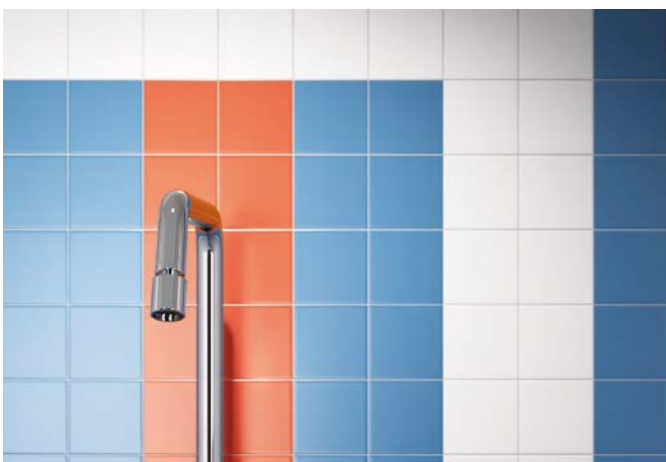
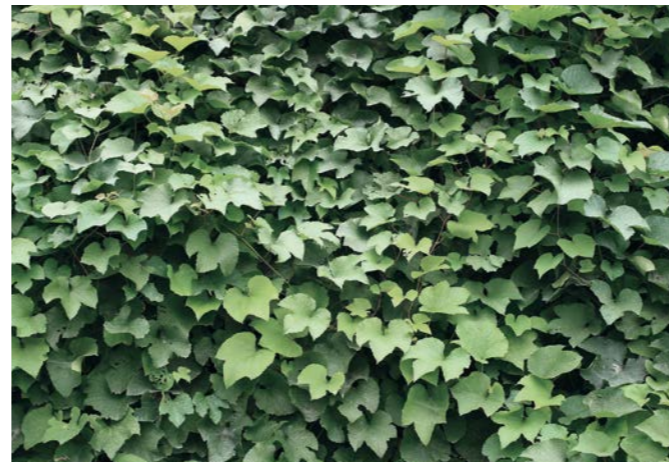
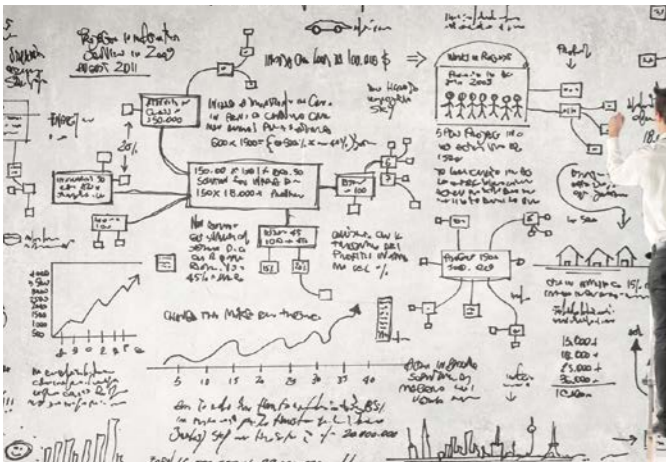
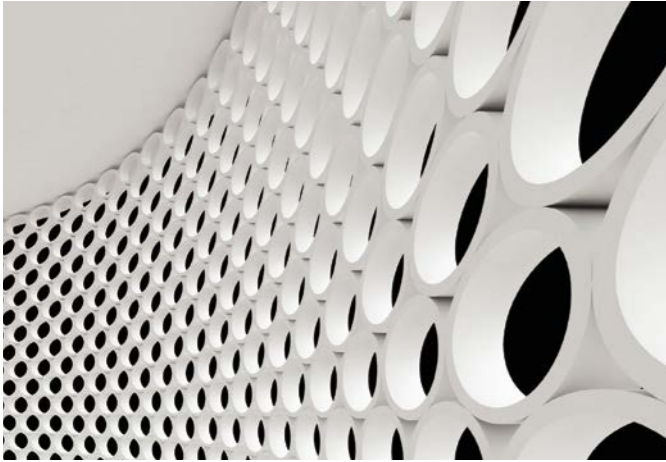
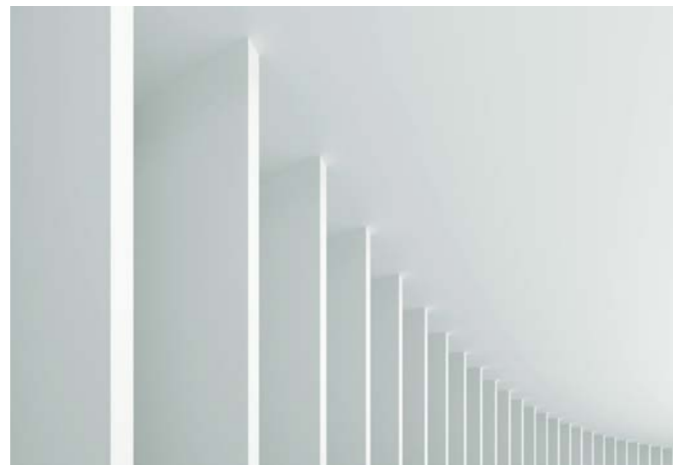


bee Italian dal 1874



arkimcollection

TINT



DESTINAZIONI D'USO

suggested applications
destination
anwendungsbereich
lugar de empleo
Предназначение
Krajnja namjena
用途



ABITAZIONE

domestic purpose
habitation
wohnbereich
habitación
жилое помещение
stanovanje
住宅



COMMERCIALE LEGGERO

tiles for light commercial traffic area
passage léger
gewerblichen bereich
pequeña superficie comercial
торговое помещение с легкой нагрузкой
male trgovine
低流量商业

INDICAZIONI D'USO

indications for use
instructions d'utilisation
anwendungsbereich
indicaciones de uso
указания по использованию
upute o korištenju
使用说明



RIVESTIMENTO

wall tiles
revêtement
wand
revestimiento
облицовка
zidovi
墙面

TIPOLOGIA DI SMALTO

typology of glaze
typologie d'émail
typologie der glasur
tipología de esmalte
типология эмали
tipologija emalja
釉料类型



SMALTO OPACO

matt glaze
email opaque
matte glasur
esmalte opaco
матовая глазурь
emajlirane mat
亚光釉

FINITURA SUPERFICIALE

surface finish
finition superficielle
oberflächen
acabado superficial
поверхностная отделка
površinska dovršenja
表面处理



NATURALE

natural
naturel
natur
matt
природный
prirodne
自然式



STRUTTURATO

slate cut
structuré
strukturiert
estructurado
Структурированный
Strukturirane
结构式

BORDO

edge
bord
rand
borde
кромка
rub
边缘



DRITTO

straight
droit
gerade
derecho
Прямой
Ravne
直线型

STONALIZZAZIONE

shade variation
variation de nuances
schattierung
destonalización
Разброс цветового тона
Gradacija
石质化



VI



BIOGRES



LEED

CREDITS 4-11

MADE IN ITALY
PRODOTTO ESCLUSIVAMENTE IN ITALIA



arkimcollection

PORCELLANATO SMALTATO

imolaceramica.it

Glazed porcelain tiles
Grès cérame émaillé
Glasiertes Feinsteinzeug
Porcelánico esmaltado
Керамогранит глазурованный
Porculansko-kamene pločice glazirane
上釉仿石瓷磚

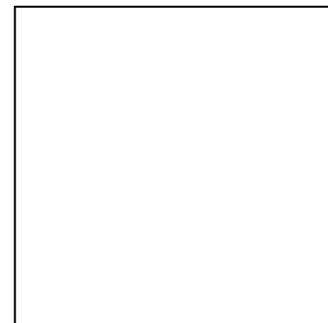
TINT

PORCELLANATO SMALTATO

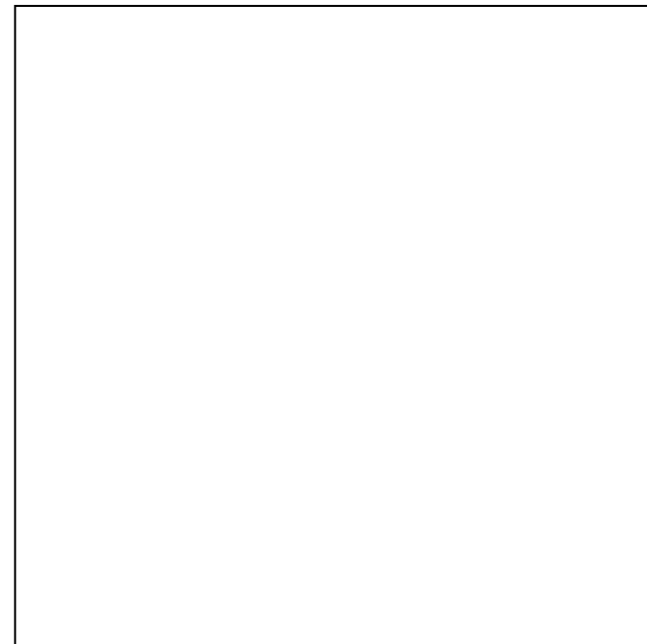
Glazed porcelain tiles
Grès cérame émaillé
Glasiertes Feinsteinzeug
Porcelánico esmaltado
Керамогранит глазурованный
Porculansko-kamene pločice glazirane
上釉仿石瓷磚

FORMATI

sizes
formats
formate
formatos
Форматы
formati
版型



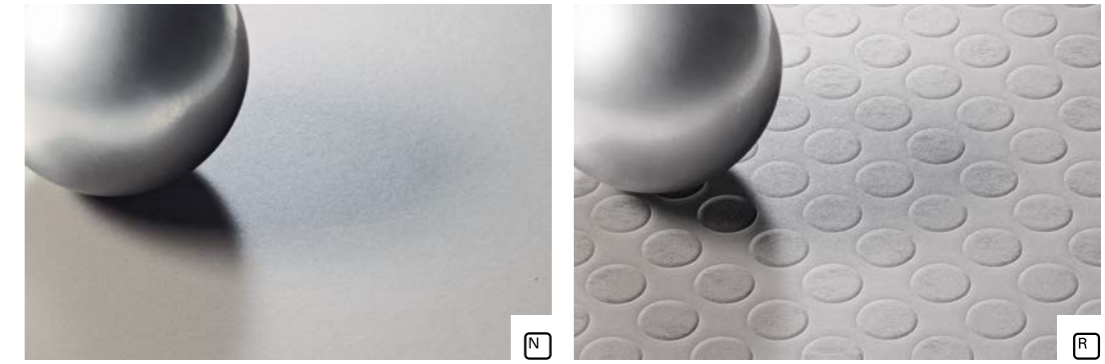
10x10
4"x4"



20x20
8"x8"

FINITURA SUPERFICIALE

surface finish
finition superficielle
oberflächen
acabado superficial
поверхностная отделка
rovšinska dovršenja
表面处理



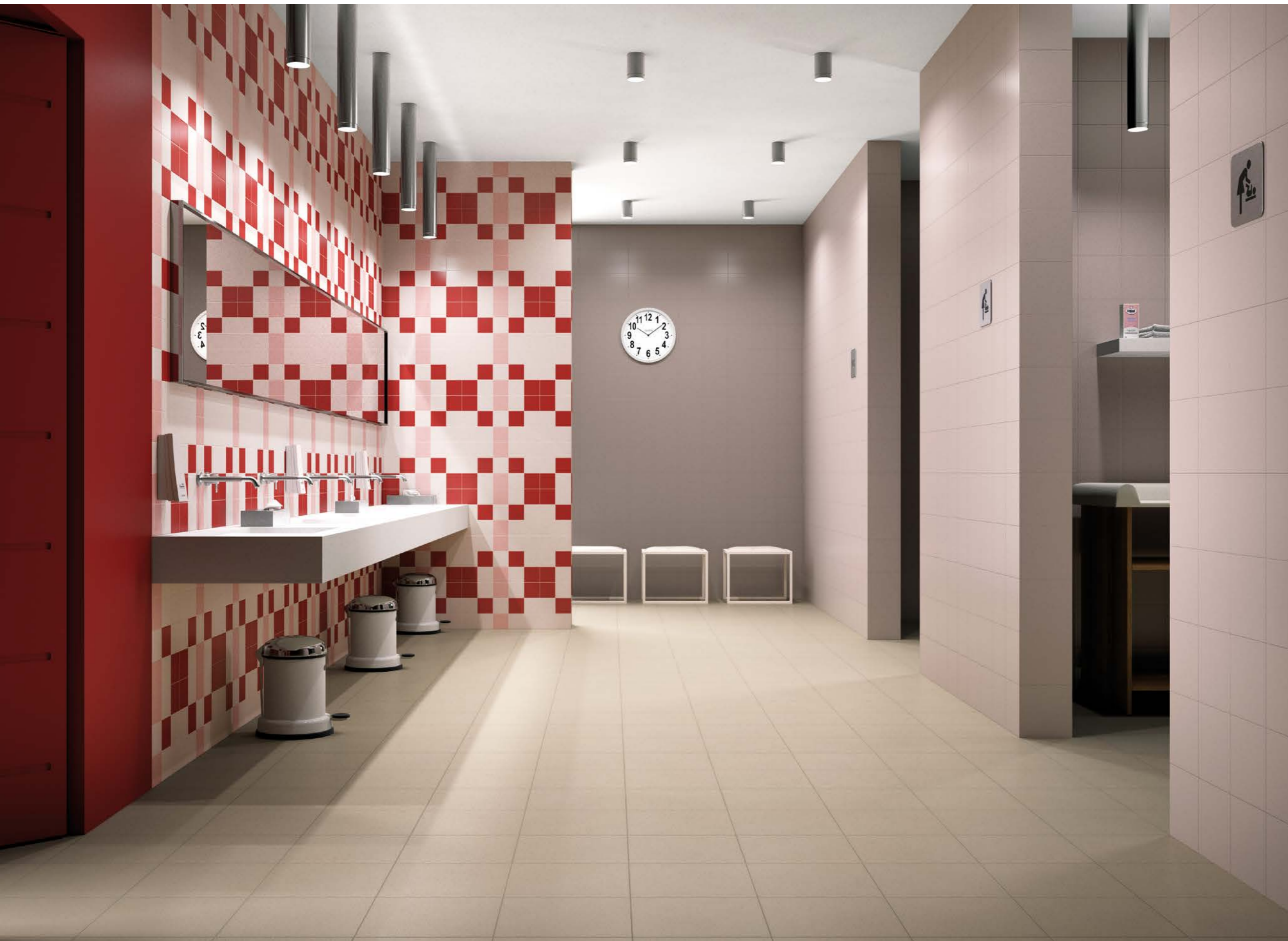
COLORE

Colours
Coloris
Farben
Colori
цвета
Boje
顏色



TINT

arkimcollection



TINT

TINT BEIGE 20

TINT TAUPE 20

TINT RED 10

TINT PINK 10

TINT CREAM 10

ZERO 30GH



TINT

TINT BEIGE 20

TINT TAUPE 20

TINT RED 10

TINT PINK 10

TINT CREAM 10

ZERO 30GH





- TINT GREEN 10
- TINT JADE 10
- TINT ICE 10
- TINT WHITE 10
- TINT PLATINUM10
- TINT TURQUISE10
- TINT NAVY 10
- ZERO 30GH



TINT

TINT GREEN 10

TINT JADE 10

TINT ICE 10

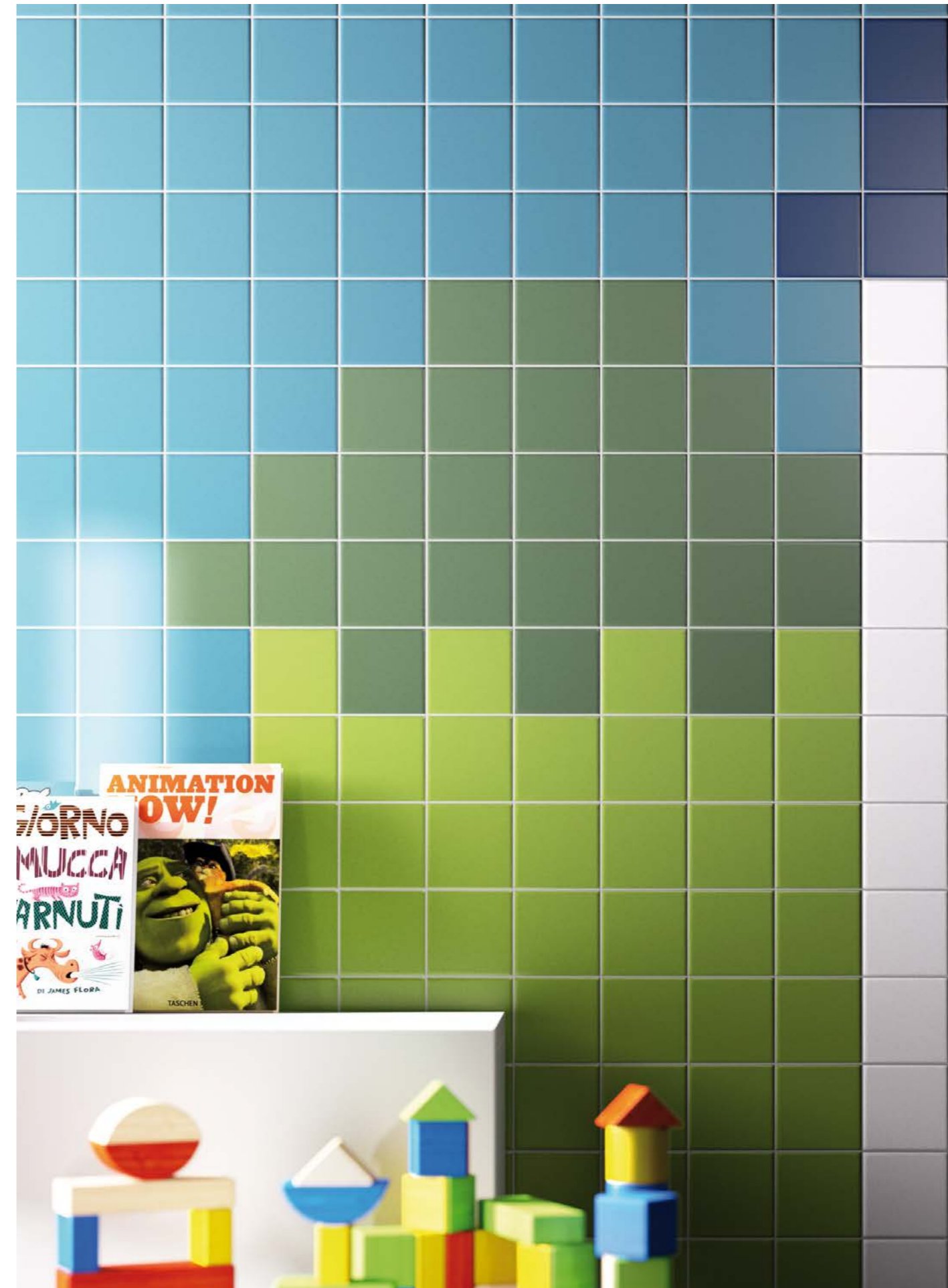
TINT WHITE 10

TINT PLATINUM10

TINT TURQUISE10

TINT NAVY 10

ZERO 30GH





TINT

TINT BLUE 10

TINT BLUE 20KOR

TINT IC WHITE

TINT IQR WHITE

TINT OC WHITE

TINT OQR WHITE

TINT ORANGE 10

TINT Q WHITE

TINT WHITE 10



TINT

TINT BLUE 10

TINT BLUE 20KOR

TINT IC WHITE

TINT IQR WHITE

TINT OC WHITE

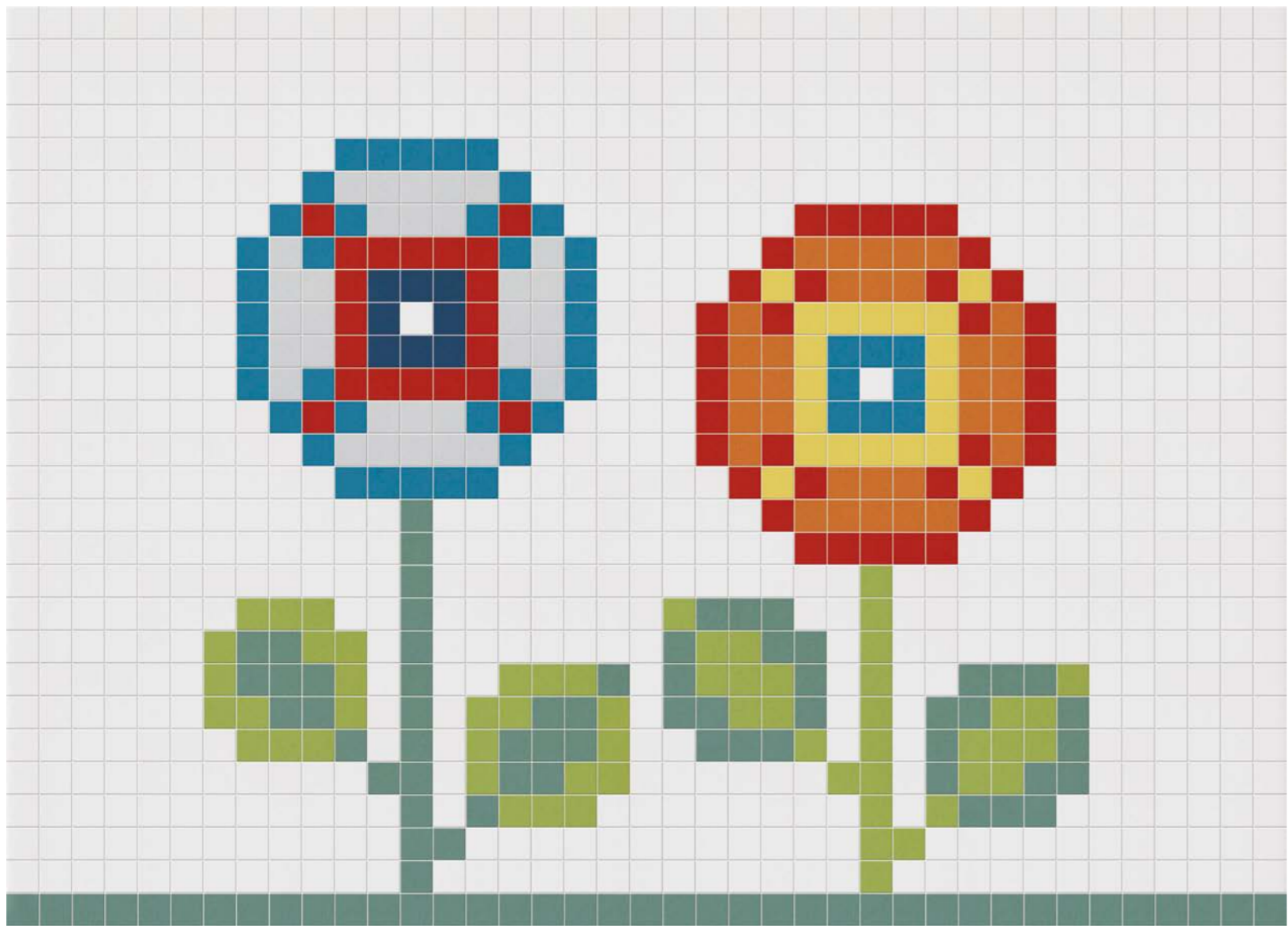
TINT OQR WHITE

TINT ORANGE 10

TINT Q WHITE

TINT WHITE 10



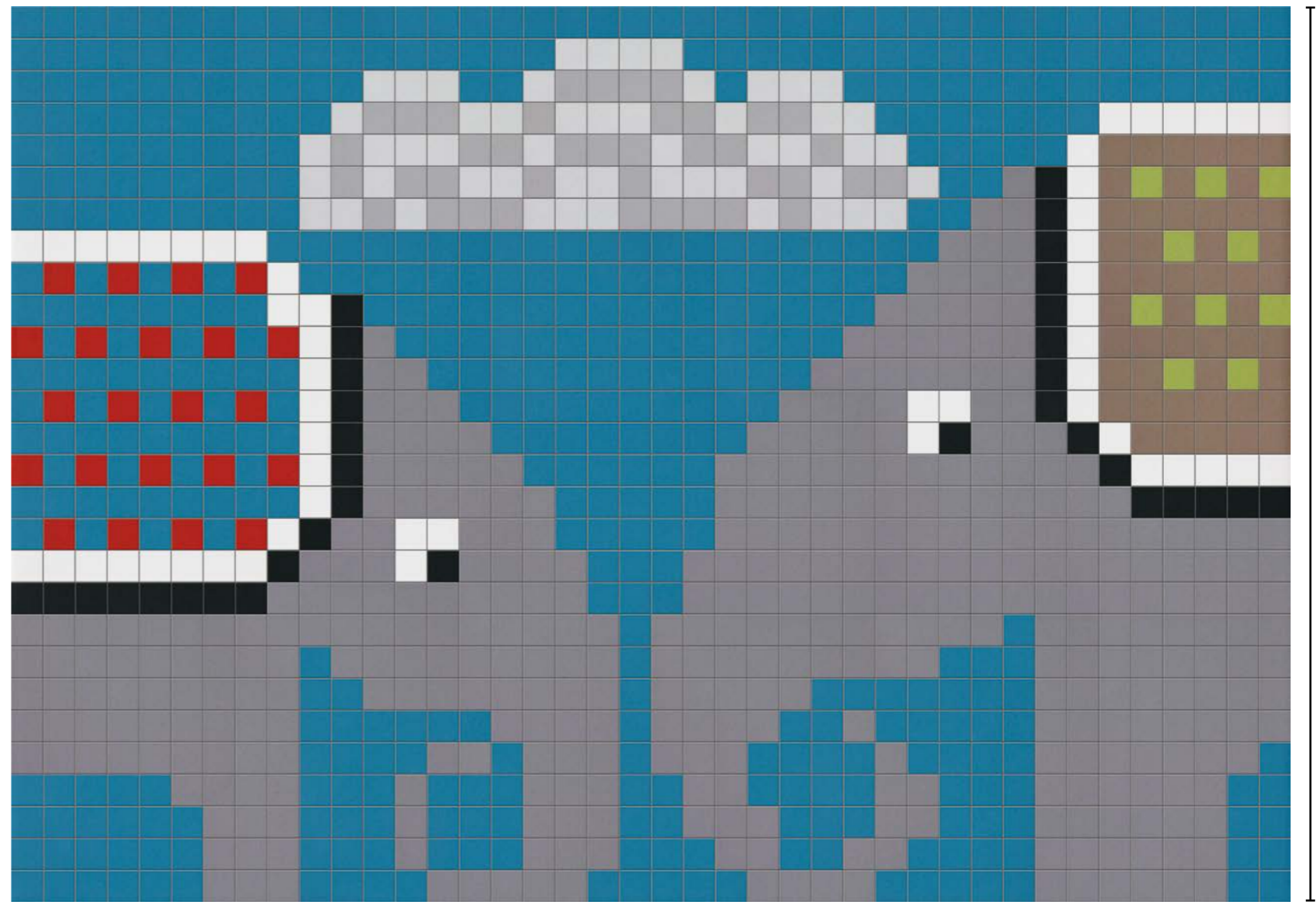


280 M

390 M

TINT WHITE 10		PZ 743
TINT JADE 10		PZ 99
TINT GREEN 10		PZ 58
TINT RED 10		PZ 56
TINT TURQUISE 10		PZ 44
TINT ICE 10		PZ 32
TINT ORANGE 10		PZ 32
TINT YELLOW 10		PZ 20
TINT NAVY 10		PZ 8

TOT 1092

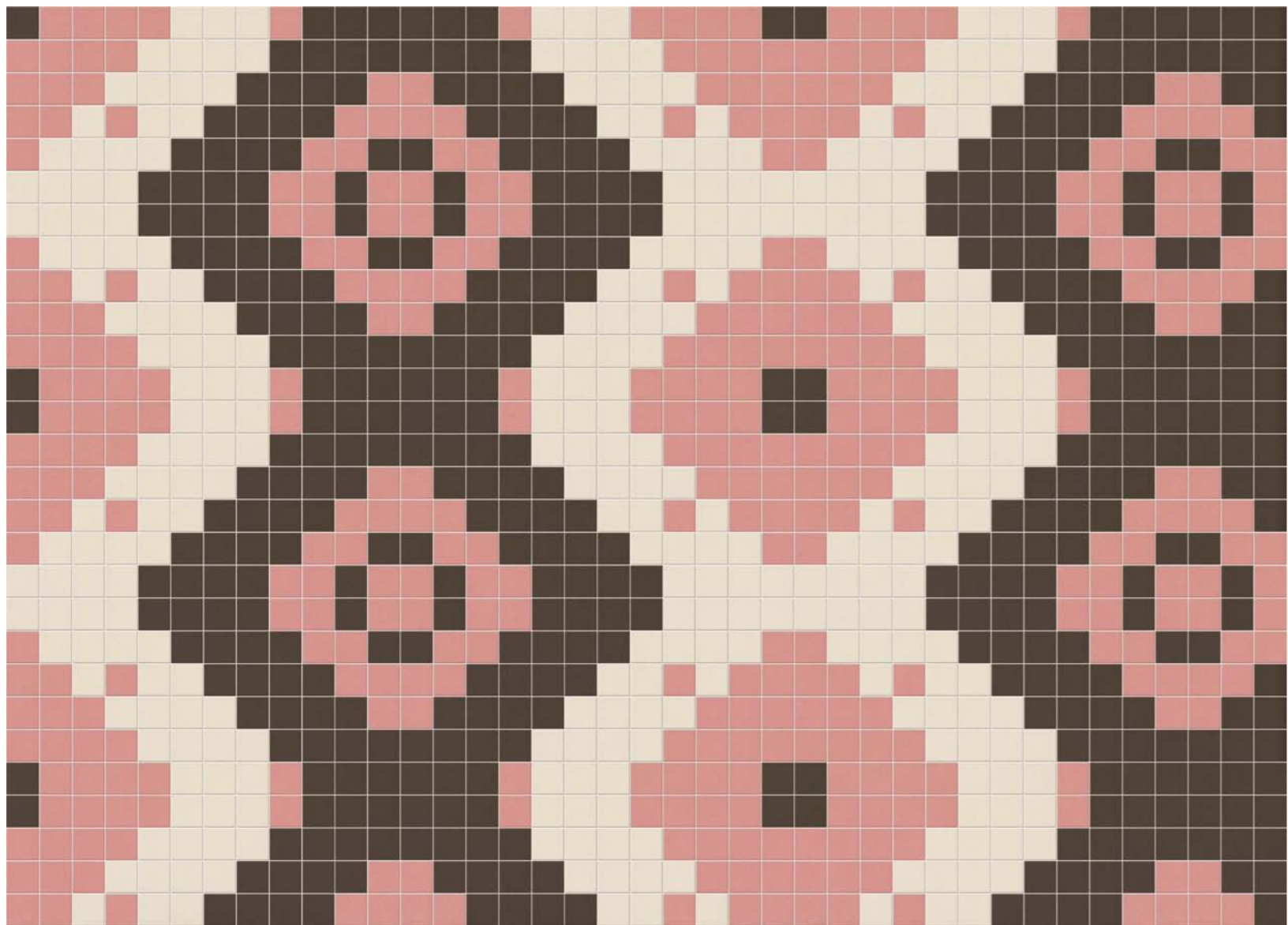


280 M

400 M

TINT TURQUISE 10		PZ 470
TINT PLATINUM 10		PZ 391
TINT ICE 10		PZ 54
TINT TAUPE 10		PZ 49
TINT PEARL 10		PZ 37
TINT BROWN 10		PZ 32
TINT WHITE 10		PZ 53
TINT RED 10		PZ 22
TINT GREEN 10		PZ 10
TINT BLACK 10		PZ 2

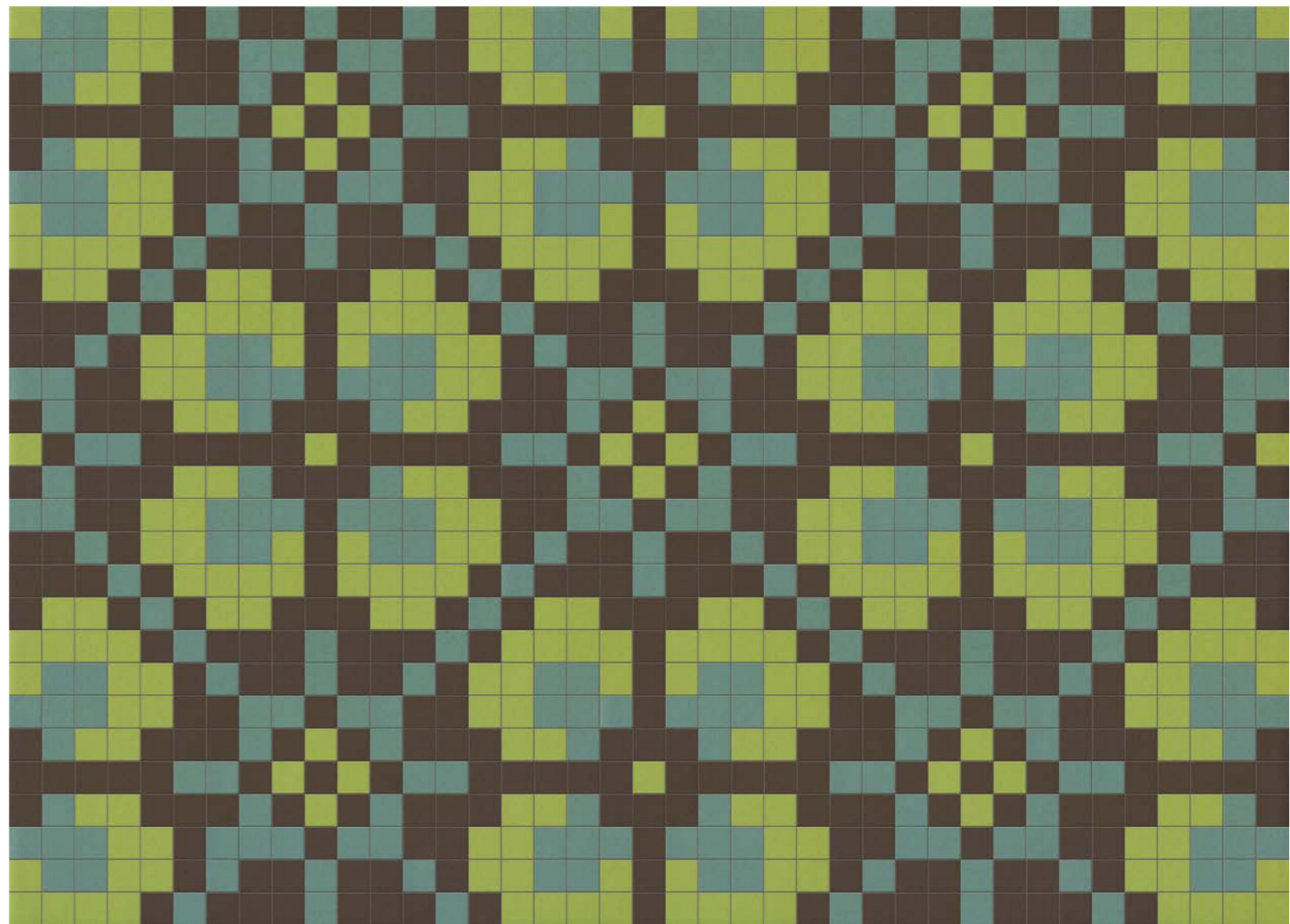
TOT 1120



280 M

390 M

- TINT BROWN 10 PZ 410
 - TINT PINK 10 PZ 376
 - TINT ALMOND 10 PZ 306
- TOT 1092**



280 M

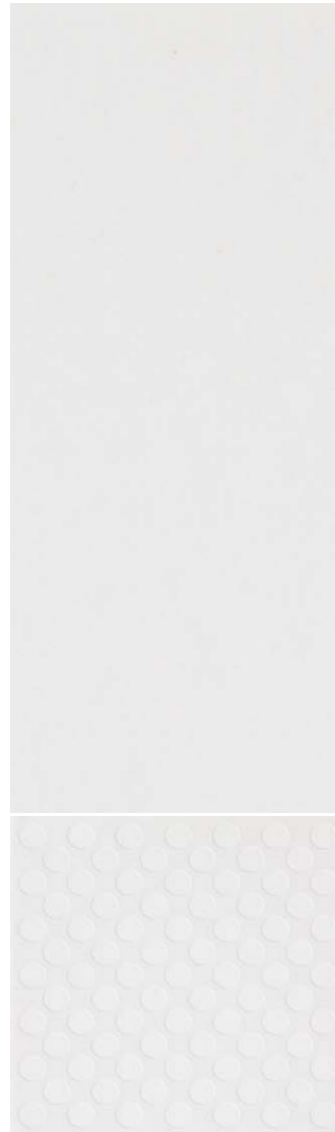
390 M

- TINT BROWN 10 PZ 476
 - TINT JADE 10 PZ 310
 - TINT GREEN 10 PZ 306
- TOT 1092**

**PAVIMENTI
E RIVESTIMENTI**

Floor tiles and Wall tiles
Sol et Revêtement
Bodenfliese und Wandfliese
Pavimento y Revestimiento
Напольная и облицовочная плитка
Podovi i zidovi
地面与墙面

Tint White



20x20 8"x8"

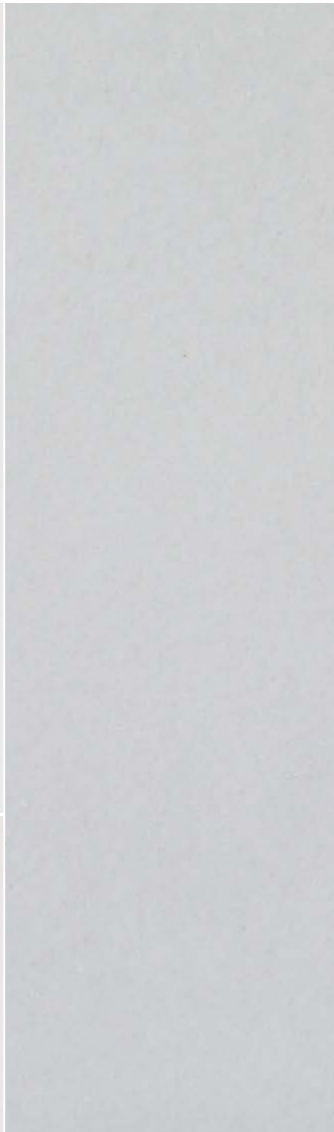
TINT WHITE 20 \approx 7-PEI4-R9-A N

TINT WHITE20KOR \approx 7-PEI 4-R11-B+C R

10x10 4"x4"

TINT WHITE 10 \approx 7-PEI4-R9-A N

Tint Ice



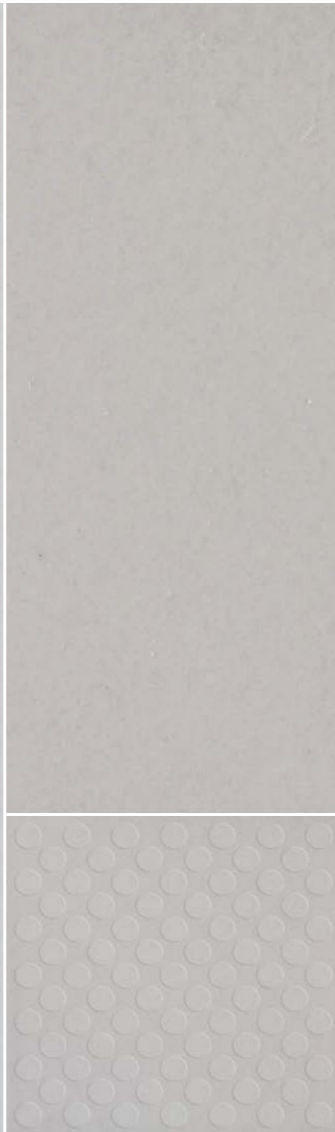
20x20 8"x8"

TINT ICE 20 \approx 7-PEI3-R9-A N

10x10 4"x4"

TINT ICE 10 \approx 7-PEI3-R9-A N

Tint Grey



20x20 8"x8"

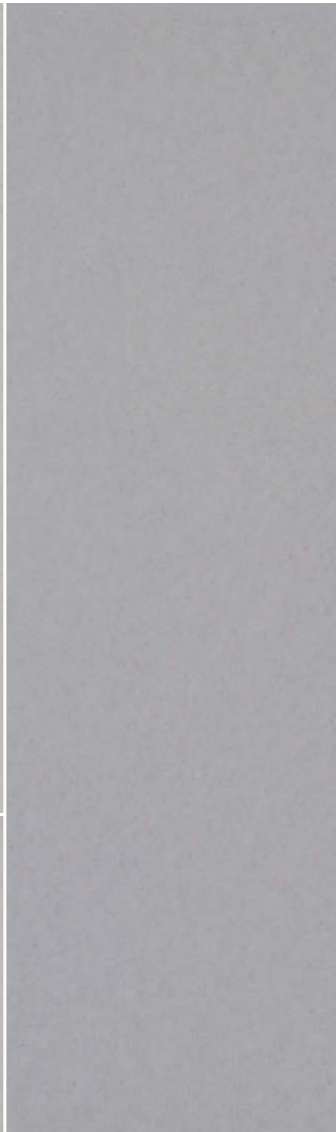
TINT GREY 20 \approx 7-PEI 3-R9-A N

TINT GREY20KOR \approx 7-PEI 3-R11-B+C R

10x10 4"x4"

TINT GREY 10 \approx 7-PEI 3-R9-A N

Tint Pearl



20x20 8"x8"

TINT PEARL 20 \approx 7-PEI 3-R9-A N

10x10 4"x4"

TINT PEARL 10 \approx 7-PEI 3-R9-A N

Tint Platinum



20x20 8"x8"

TINT PLATINUM20 \approx 7-PEI 2-R9-A N

10x10 4"x4"

TINT PLATINUM10 \approx 7-PEI 2-R9-A N

Tint Titanium



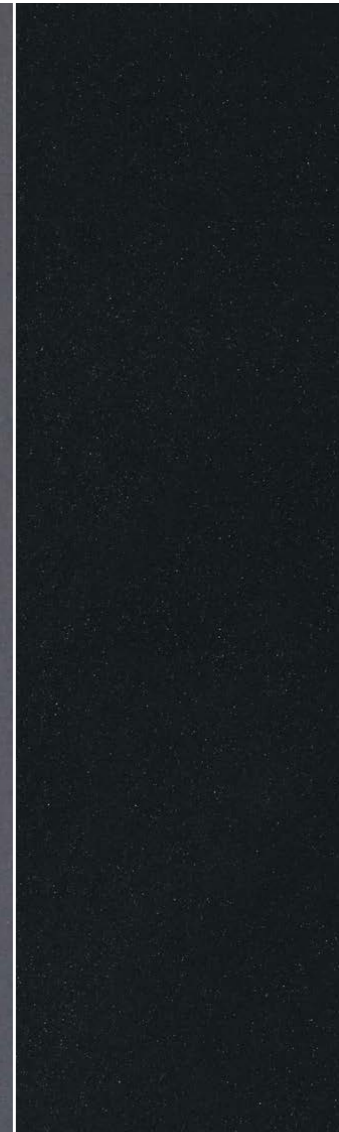
20x20 8"x8"

TINT TITANIUM20 \approx 7-R9-A N

10x10 4"x4"

TINT TITANIUM10 \approx 7-R9-A N

Tint Black



20x20 8"x8"

TINT BLACK 20 \approx 7-PEI 2-R9-A N

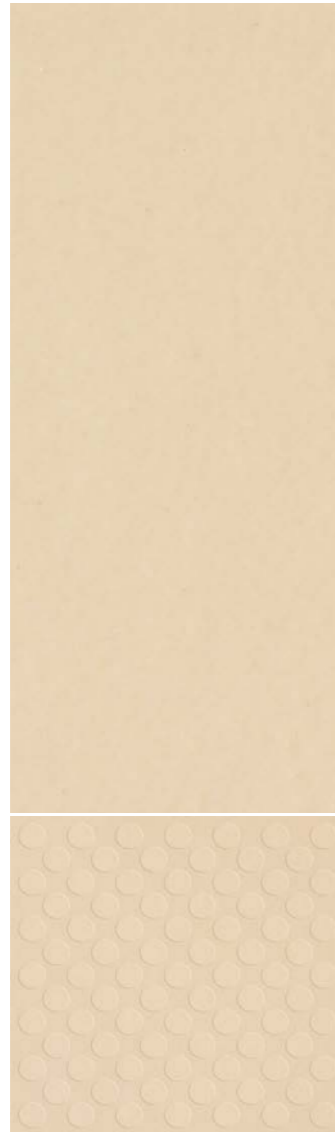
10x10 4"x4"

TINT BLACK 10 \approx 7-PEI 2-R9-A N

**PAVIMENTI
E RIVESTIMENTI**

Floor tiles and Wall tiles
Sol et Revêtement
Bodenfliese und Wandfliese
Pavimento y Revestimiento
Напольная и облицовочная плитка
Podovi i zidovi
地面与墙面

Tint Cream



20x20 8"x8"

TINT CREAM 20 \approx 7-PEI 4-R9-A N

TINT CREAM20KOR \approx 7-PEI 4-R11-B+C R

10x10 4"x4"

TINT CREAM 10 \approx 7-PEI 4-R9-A N

Tint Almond



20x20 8"x8"

TINT ALMOND 20 \approx 7-PEI 4-R9-A N

10x10 4"x4"

TINT ALMOND 10 \approx 7-PEI 4-R9-A N

Tint Beige



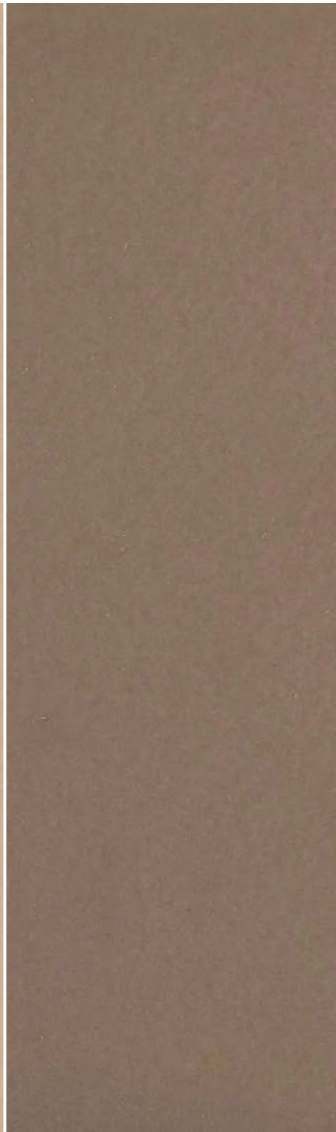
20x20 8"x8"

TINT BEIGE 20 \approx 7-PEI 4-R9-A N

10x10 4"x4"

TINT BEIGE 10 \approx 7-PEI 4-R9-A N

Tint Taupe



20x20 8"x8"

TINT TAUPE 20 \approx 7-PEI 2-R9-A N

10x10 4"x4"

TINT TAUPE 10 \approx 7-PEI 2-R9-A N

Tint Brown



20x20 8"x8"

TINT BROWN 20 \approx 7-PEI 2-R9-A N

10x10 4"x4"

TINT BROWN 10 \approx 7-PEI 2-R9-A N

Tint Orange



20x20 8"x8"

TINT ORANGE 20 \approx 7-PEI 3-R9-A N

10x10 4"x4"

TINT ORANGE 10 \approx 7-PEI 3-R9-A N

Tint Red



20x20 8"x8"

TINT RED 20 \approx 7-PEI 2-R9-A N

10x10 4"x4"

TINT RED 10 \approx 7-PEI 2-R9-A N



DECORI

Decorations
Décors
Muster
Decoraciones
Декоры
Dekoracije
装饰

TINT B.WHITE 20 1,5x20 - 0.6"x8"	TINT B.BLUE 20 1,5x20 - 0.6"x8"	TINT B.ALMOND 20 1,5x20 - 0.6"x8"	TINT B.YELLOW 20 1,5x20 - 0.6"x8"
TINT B.ICE 20 1,5x20 - 0.6"x8"	TINT B.TURQU 20 1,5x20 - 0.6"x8"	TINT B.CREAM 20 1,5x20 - 0.6"x8"	TINT B.PINK 20 1,5x20 - 0.6"x8"
TINT B.GREY 20 1,5x20 - 0.6"x8"	TINT B.NAVY 20 1,5x20 - 0.6"x8"	TINT B.BEIGE 20 1,5x20 - 0.6"x8"	TINT B.ORANGE20 1,5x20 - 0.6"x8"
TINT B.PEARL 20 1,5x20 - 0.6"x8"	TINT B.GREEN 20 1,5x20 - 0.6"x8"	TINT B.TAUPE 20 1,5x20 - 0.6"x8"	TINT B.RED 20 1,5x20 - 0.6"x8"
TINT B.PLATIN20 1,5x20 - 0.6"x8"	TINT B.JADE 20 1,5x20 - 0.6"x8"	TINT B.BROWN 20 1,5x20 - 0.6"x8"	
TINT B.TITAN 20 1,5x20 - 0.6"x8"	TINT B.BLACK 20 1,5x20 - 0.6"x8"		

PEZZI SPECIALI

Special pieces
Pièces spéciales
Sonderpreise
Piezas especiales
Специальные элементы
Naročiti dijelovi
特制件

Formato Size	10x20 4"x8"	3x10 1.2"x4"	3x10 1.2"x4"	3x20 1.2"x8"	3x20 1.2"x8"
	TINT Q WHITE	TINT OC WHITE	TINT IC WHITE	TINT OQR WHITE	TINT IQR WHITE
	TINT Q GREY	TINT OC GREY	TINT IC GREY	TINT OQR GREY	TINT IQR GREY
	TINT Q BLUE	TINT OC BLUE	TINT IC BLUE	TINT OQR BLUE	TINT IQR BLUE
	TINT Q CREAM	TINT OC CREAM	TINT IC CREAM	TINT OQR CREAM	TINT IQR CREAM

CARATTERISTICHE TECNICHE SPECIFICHE

Technical features specifications - Caractéristiques techniques spécifique - Technische Eigenschaften - Características técnicas específicas
Требуемые технические характеристики - Specifična tehnička svojstva - 特殊技术规范

P = Gres porcellanato a tutto spessore - Full body porcelain tiles - Grés cérame pleine masse - Durchgefärbtes Feinsteinzeug - Gres porcelánico a toda masa - 各种厚度的仿石瓷砖

PROGETTO	TIP	ARTICOLO	PEI - ISO 10545 - 7	DIN 51130 (R)	DIN 51097 (A+B+C)	ASTM C1028/96		BCR Rep.CEC 6/81		DM 14/6/89 n.236	
			CLASSE			n.a.	nb.	g.a.	g.b.	c.a.	g.b.
TINT	GV	GREY	3	R9	A	/	/	> 0,4	> 0,4	> 0,4	> 0,4
		BLUE	2								
		GREEN	3								
		BLACK	2								
		WHITE	4								
		YELLOW	4								
		JADE	3								
		ALMOND	4								
		BEIGE	4								
		BROWN	2								
		CREAM	4								
		ICE	3								
		NAVY	2								
		ORANGE	3								
		PEARL	3								
		PINK	3								
		PLATINUM	2								
RED	2										
TAUPE	2										
TITANIUM	2										
TURQUISE	2										
TINT KOR	GV	BLUE 20KOR	2	R11	B+C	> 0,7	> 0,6	> 0,4	> 0,4	> 0,4	> 0,4
		CREAM 20KOR	4								
		GREY 20KOR	3								
		WHITE 20KOR	4								

ECO

La natura e la tecnologia si fondono per dar vita a un nuovo concetto di ceramica che mette al centro il rapporto tra l'uomo e l'ambiente; un binomio inscindibile per il conseguimento consapevole dei principi di eco-efficienza aziendale ed eco-compatibilità ambientale sigillato da importanti riconoscimenti come la Certificazione Ambientale ISO 14001, la Registrazione EMAS, i crediti L.E.E.D., la certificazione ECOLABEL e la produzione di prodotti ceramici marchiati Biogres.

Nature and technology combine to give birth to a new concept in ceramic tiles which places the relationship between man and the environment at the centre; an inseparable combination for the conscious achievement of eco-efficient corporate principles as well as those of environmental eco-compatibility, sealed with important recognitions such as ISO 14001 Environmental Certification, the Emas Registration, L.E.E.D. credits, Ecolabel Certification and the production of ceramic products with the Biogres.

La nature et la technologie fusionnent pour donner vie à un nouveau concept de céramique dont le cœur est la relation entre l'homme et l'environnement; un binôme inséparable si l'on veut ériger, en connaissance de cause, des principes tels que l'éco-efficacité de l'entreprise et l'éco-compatibilité environnementale, désormais reconnus par l'attribution de la Certification Environnementale ISO 14001, la Certification Emas, les points de crédit du référentiel L.E.E.D., l'écolabel et symbolisés par la production de produits céramiques caractérisés par la marque Biogres.

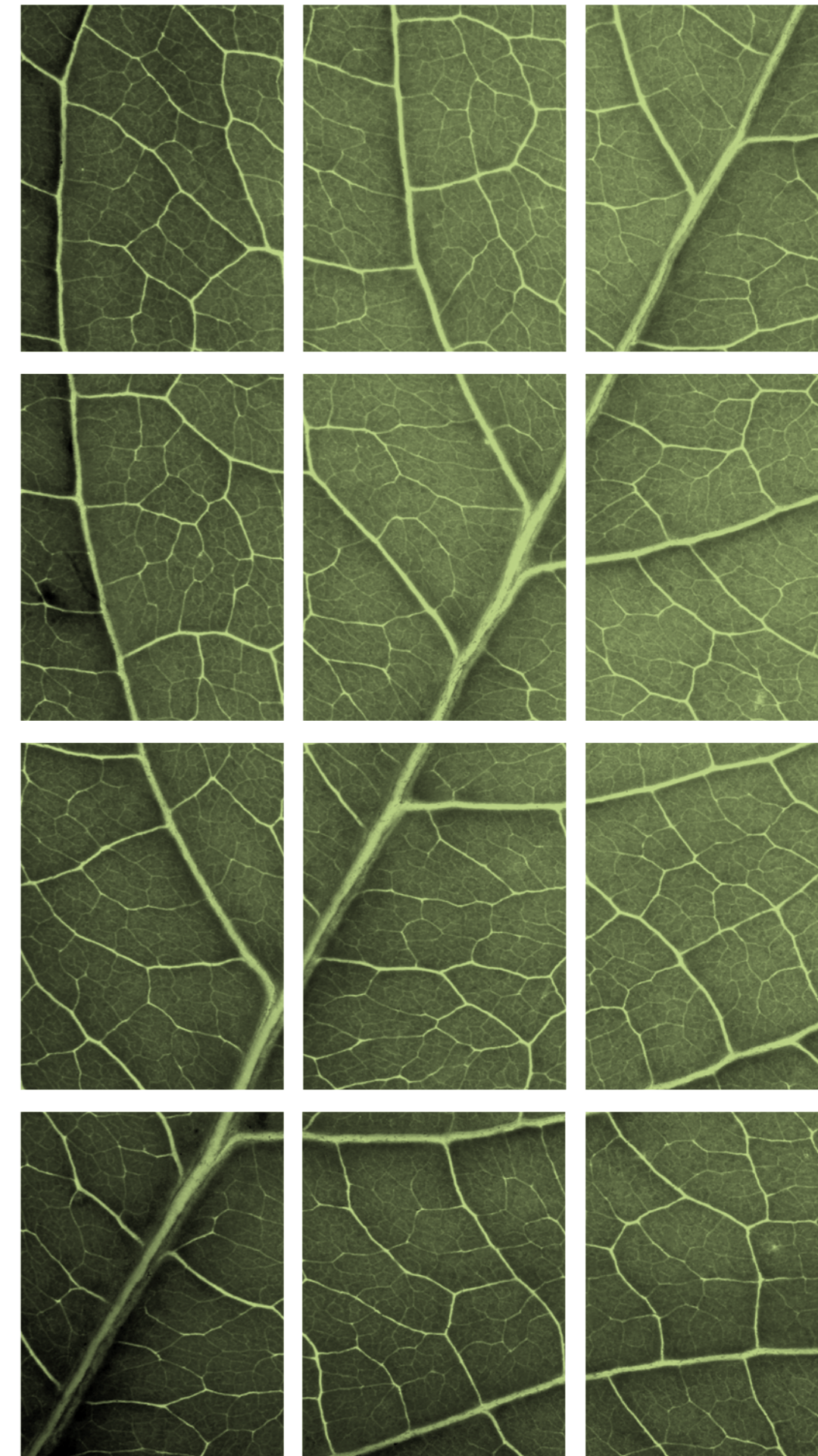
Natur und Technik verbinden sich, um ein neues Konzept der Keramik zu schaffen, in dessen Mitte die Beziehung zwischen Mensch und Umwelt steht; eine untrennbare Zweisamkeit für die bewusste Durchführung der Prinzipien der ökologischen Effizienz auf Firmenebene und der Umweltverträglichkeit, die durch wichtige Anerkennungen wie das Umweltzertifikat ISO 14001 (Certificazione Ambientale ISO 14001), die Zugehörigkeit zu EMAS (Registrazione EMAS), die L.E.E.D.-Anerkennungen und das ECOLABEL-Zertifikat (certificazione ECOLABEL), sowie durch die Herstellung von Keramikprodukten der Marke Biogres besiegelt sind.

La naturaleza y la tecnología se funden para dar vida a un nuevo concepto de cerámica que subraya la relación entre el hombre y el ambiente; un binomio inseparable para alcanzar los principios de eco-eficiencia empresarial y eco-compatibilidad ambiental sellado por importantes reconocimientos como la Certificación Ambiental ISO 14001, el Registro EMAS, los créditos L.E.E.D., la certificación ECOLABEL y la producción de productos cerámicos con la marca Biogres.

Природа и технология слились воедино для воплощения новой концепции в керамике, ставящей в центр отношение между человеком и окружающей средой; неразрывный симбиоз для сознательного достижения принципов эффективного природосбережения и экологической совместимости, скрепленных значительными признаниями, такими как Сертификация экологического менеджмента ISO 14001, регистрация EMAS, кредиты L.E.E.D., сертификация ECOLABEL и производство керамических продуктов под маркой Biogres.

Prirada i tehnologija se spajaju u rađanju novog koncepta keramike što se usredotočuje na odnos čovjeka i okoliša; nerazdvojna kombinacija za svjesno ostvarivanje načela ekološke učinkovitosti poduzeća i ekološke kompatibilnosti, potvrđena značajnim priznanjima kao što su Certifikat o zaštiti okoliša ISO 14001, registracija EMAS, LEED krediti, certifikacija Ecolabel te proizvodnja keramičkih proizvoda branda Biogres.

自然与技术结合，带来全新的陶瓷理念，以人与自然的的关系为中心，落实企业生态效率和环境兼容性原则，获得ISO 14001环境认证、EMAS注册、LEED分数、ECOLABEL认证以及Biogres品牌陶瓷产品生产等重要认可。





COOPERATIVA
CERAMICA
D'IMOLA

**COOPERATIVA
CERAMICA
D'IMOLA**

Via V. Veneto, 13
40026 Imola BO - Italia
Tel.+ 39 0542 601601
Fax+ 39 0542 31749
ccimola.it

imolaceramica.it
info@imolaceramica.it

be Italian dal 1874

arkimcollection

